



TECHNICAL TEXTILES AND SURFACE TREATMENT SYSTEMS



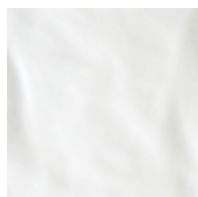
**Tack rags**



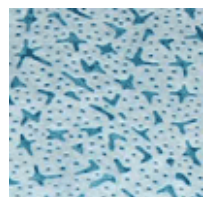
**Buffing pads**



**Sealant wipes**



**Soft wipes**



**Solvent wipes**



**Microfiber wipes**



**Wet Line**



**Coloured Wipes**



TECHNICAL TEXTILES AND SURFACE TREATMENT SYSTEMS

## Tack rags



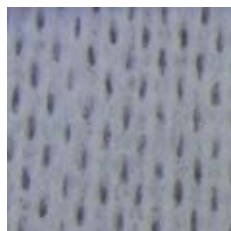
### TRPE70

- Tack rag in knitted polyester
- To remove any sanding dust (after cataphoresis or retouch)
- 100% polyester - monofilament yarn
- No lint, self knitted edges, heat sealed cut For high tech and OEM usage



### Gekartack

- Tack Rag in 100% Rayon Fiber
- Remove sanding dust in OEM professional usage
- 100% Rayon nonwoven fiber
- Perfect Particle retention due to special structure, hot melt impregnation



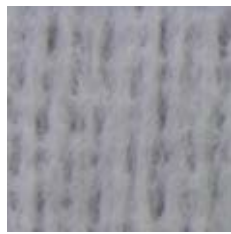
### TRX 0

- Tack rag on non woven base
- To remove any sanding dust (after cataphoresis or retouch)
- 50% rayon - 50% polyester
- No lint, excellent particle retention, no transfer of resin



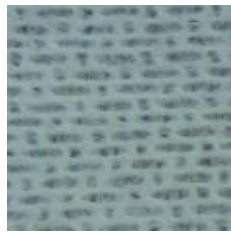
### TRX 3

- Tack Rag in non woven
- To remove any sanding dust (after cataphoresis or retouch)
- 50% viscose - 50% polyester
- No lint, excellent particle retention, no transfer of resin



#### SMT

- Tack rag made on a non woven basis
- To remove any sanding dust
- 50% polyester - 50% rayon
- No lint, excellent particle retention, no transfer of resin



#### G-Tack Plus

- ZERO TRANSFER Tack Rag for water based paint usage
- Remove sanding dust in OEM designed for water based paints/coatings
- 50% PES / 50% Rayon nonwoven fiber
- Perfect Particle retention due to special structure, water based impregnation



#### C425

- Bleached tack rag
- To remove any sanding dust
- 100% cotton
- Good particle retention, no transfer of resin



#### CE425

- Unbleached tack rag
- To remove any sanding dust
- 100% cotton
- Good particle retention, no transfer of resin



#### CE820

- Tack Rag in Natural Unbleached Cotton
- Remove sanding dust in after market environment
- 100% Unbleached cotton woven fiber
- Good Particle retention, hot melt impregnation



#### GMR

- Tack rag in bleached cotton gauze
- To remove any sanding dust
- 100% cotton
- Good particle retention, no transfer of resin, 16 useable sides



**GMRE**

- Tack rag in natural cotton gauze
- To remove any sanding dust
- 100% cotton
- Good particle retention, no transfer of resin, 16 useable sides



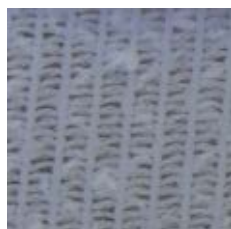
**P65**

- Bleached tack rag
- To remove any sanding dust
- 100% cotton
- Good particle retention, no transfer of resin



**PE65**

- Unbleached tack rag
- Eliminates sanding dust (exit cataphoresis area or spot repair area)
- 100% cotton
- Good particle retention



**TRPE90**



TECHNICAL TEXTILES AND SURFACE TREATMENT SYSTEMS

### Buffing pads



#### DLMV A

- Polishing Disc, self attachment with velcro system
- Retouch area, finish, renovation, polishing and cleaning
- Polyurethane foam - abrasive  
Easy and fast attachment, no lint



#### DLMV PA

- Polishing Disc, self attachment with velcro system
- Retouch area, finish, renovation, polishing and cleaning
- 100% polyurethane foam - low abrasive
- Easy and fast attachment, no lint



#### DLMV TA

- Polishing disc, self attachment with velcro system
- Retouch area, finish, renovation, polishing and cleaning
- 100% polyurethane foam - very abrasive
- Easy and fast attachment, no lint



#### DLMV TD

- Polishing Disc, self attachment with velcro system
- Retouch area, finish, renovation, polishing and cleaning
- 100% polyurethane foam - soft
- Easy and fast attachment, no lint For delicate surfaces



#### DLW

- Polishing Disc with self attachment velcro system
- Retouch area
- 100% calibrated wool (26 microns) (4,5 mm thickness)
- Easy and fast attachment, no lint Fast spot repair without aureole risks



#### DLZ

- Polishing Disc with self attachment velcro system
- Cleaning, finish, renovation, polishing
- 100% calibrated wool (26 microns) (12mm thickness)
- Easy and fast attachment Knitted wool with reduced linting compared to lambswool bonnet



#### DLPDM

- Polishing Disc on a natural lambswool base
- Diameters : 76 - 100 - 120 - 135 - 150 - 180 and 200 mm
- 100% natural wool - lambswool bonnet



#### DLD

- Polishing Disc with velcro attachment
- Retouch area
- 100% viscose + binder
- Fast and easy attachment



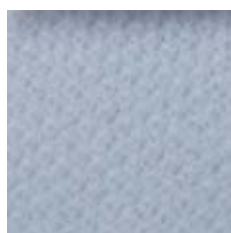
#### D3W

- AIRcooling Buffing Pad with self attachment Velcro® system
- Retouch and Spot Repair area
- Calibrated wool (26 microns) 4,5 mm thickness + 3D PES Interface
- Cool and fast spot repair With optimal shine and zero hologram risk, long lifetime



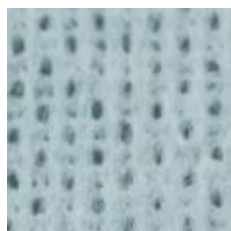
TECHNICAL TEXTILES AND SURFACE TREATMENT SYSTEMS

## Sealant wiping



### Novotex

- Polyester knitted wipe
- Sealer wiping
- 100% polyester
- Zero lint, pre washed fibres, heat sealed edges



### Printex

- Non woven wipe - apertured structure
- Sealer wiping, strong and absorbent finishing wipe
- 100% rayon
- Good absorption, high resistance



### Gekartex

- Nonwoven special sealant wipe with apertured structure
- Sealant wiping, special structured surface for good PVC penetration
- 100% Rayon + binder
- Good absorption and penetration and wiping of PVC sealant



### XM3

- Non woven wipe with an apertured structure
- Sealer wiping
- 50% viscose / 50% polyester
- Good absorption, no lint and resistant to solvents



TECHNICAL TEXTILES AND SURFACE TREATMENT SYSTEMS

### Soft wiping



#### LU02

- Non woven wipe with an aperture structure
- Finish wiping
- 50% polyester - 50% rayon
- excellent for polishing



#### Surtex

- Non woven wipe with an aperture structure
- Finish wiping (excellent for polishing)
- 50% polyester - 50% rayon
- Economic, high absorption capacity

no  
photo  
available

#### Vertex 1

- Non woven wipe with a plain and smooth structure
- Soft wiping, dry and wet
- 100% rayon  
Very absorbent, light weight

no  
photo  
available

#### Vertex 2

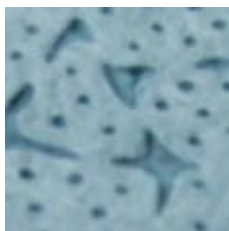
- Non woven wipe with an embossed or plain structure
- Soft wiping, dry or wet, polishing
- Variable 50% polyester - 50% rayon
- Very soft, large absorption capacity, Lint!





TECHNICAL TEXTILES AND SURFACE TREATMENT SYSTEMS

## Solvent wiping



### Bluetex

- Non woven wipe "melt blown" technology
- Solvent wiping, grease and oil wiping
- 100% polypropylene - melt blown + surfactant
- Good absorption, no lint Limited strength



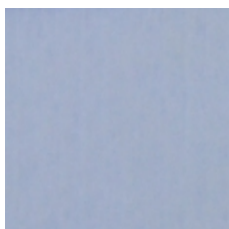
### DNM2

- Non woven wipe with a plain structure
- To remove grease from bodies - any other application with solvents.
- 52% cellulose - 48% polyester
- Very resistant, no lint



### DNM2K

- Non woven wipe with a creped structure
- Solvent wiping
- 52% cellulose - 48% polyester
- No lint, very resistant



### DNM3

- Non woven wipe with a plain structure
- Solvent wiping
- 52% cellulose - 48% polyester
- Very resistant, no lint



#### DNM4

- Non woven wipe with aperture structure
- Solvent wiping
- 54% cellulose - 46% polyester
- Very resistant, no lint Rough scrubbing surface



#### DNM5

- Non woven wipe
- Solvent wiping
- 52% cellulose - 48% polyester



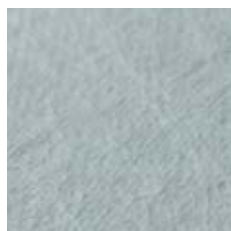
#### DNM5K

- Non woven wipe with a creped structure
- Solvent wiping
- 52% cellulose - 48% polyester
- No lint, very resistant



TECHNICAL TEXTILES AND SURFACE TREATMENT SYSTEMS

## Microfiber wipes



### Coretex

- Treated and washed Monofilament Non Woven Microfiber
- Finishing Wiping
- 70% Polyester / 30% Polyamide Monofilament Microfiber
- ZERO LINT, excellent absorption, no micro scratches, high capacity and speed



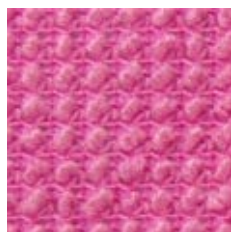
### Gekamicro

- Non treated Monofilament Non Woven Microfiber
- Finishing wiping
- 70% Polyester / 30% Polyamide Monofilament Microfiber
- Zero lint, Excellent absorption, Hard surface wipe, to be moistened before usage, no micro scratches, high capacity and speed



### Microtex Minha

- Textile microfiber - woven
- Finish wiping
- 20% polyamide - 80% polyester



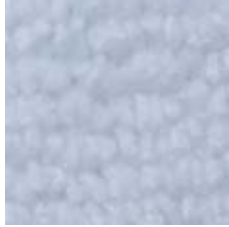
### Nanotex

- Textile microfiber - woven
- Finish wiping
- Silicone free, efficiency, operational time saving, remarkable absorption, washable



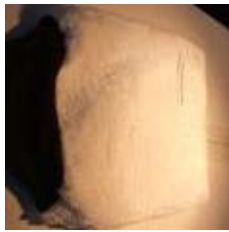
### Microgant

- Textile Fine Structured Woven Microfiber Glove
- Polishing and Finishing Glove  
70% PES / 30% Polyamide



### Microwhite

- Textile Woven White Microfiber Wiper with heat sealed edges
- Polishing and Finishing  
70% PES / 30% Polyamide



### Microgantcuff

- Textile Heavy Structured Woven Microfiber Glove with Cuff
- Polishing and Finishing Glove  
70% PES / 30% Polyamide



TECHNICAL TEXTILES AND SURFACE TREATMENT SYSTEMS

## Wet Line



### FODEX

- Presaturated MONOFILAMENT ZERO LINT non woven wiper, impregnated with organic solvents
- Remove grease and dirt particles and add anti-static properties to metal and plastic surfaces prior to coating
- 70% Polyester / 30% Polyamide Monofilament Microfiber
- zero lint, no VOC emissions, no flash point



### Novoclean

- Presaturated non woven apertured wiper, impregnated with organic solvents
- Remove grease and dirt particles and add anti-static properties to metal and plastic surfaces prior to coating
- 55% Polyester / 45% Rayon
- no VOC emissions, no flash point



### Gekaclean

- Pre-saturated non woven sealant wipes packed in bucket
- (epoxy/elastomere basis) specific formulation Fast functionality Special development for automotive industry Removes bitumous residues from car body
- Soft and resistant non woven base sheet Limited linting Recyclable polypropylene fibres
- Mobile and ease of portability Protects product Distributed per sheet Keeps workstations neat Better usage control



TECHNICAL TEXTILES AND SURFACE TREATMENT SYSTEMS

### Coloured wiping



#### Kotex

- Non woven wipe, colour coded
- Disposable, limited lifetime
- 90% rayon with binder - 10% polyester
- Efficient one way wiper



#### Lavtex

- Non woven cloth - needle punched technology
- In hospital or agro environment
- 70% rayon / 20% polyprop / 10%PES
- Washable and resistible to bleach and all detergents



#### Novapro

- Non woven cloth apertured structure
- Used in kitchen area
- 70% rayon / 30% PES
- Bacteria static treated



#### Serpex

- Non-woven Mop - mix
- 30% viscose dyed spinning - 30% PES - 20% viscose white - 20% PP